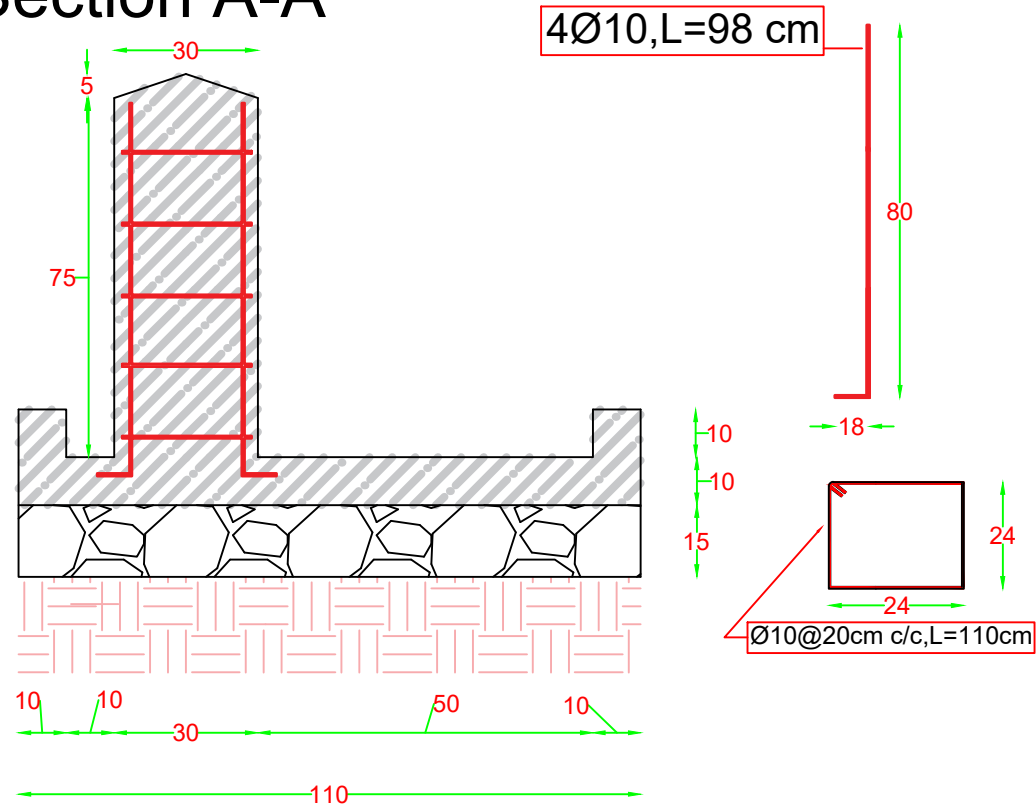
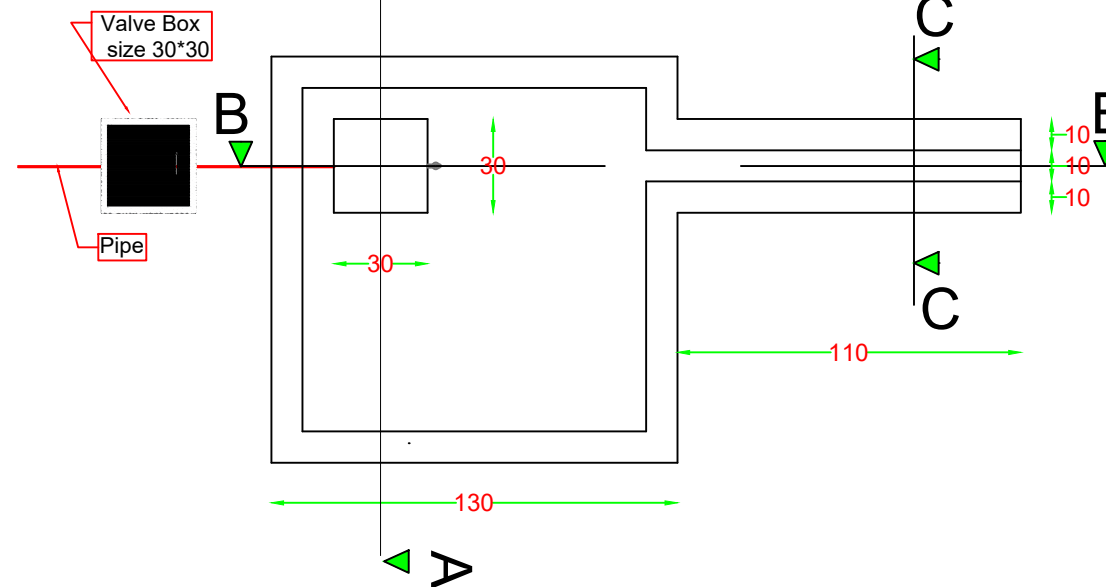


Drawing of One Tap Stand Post

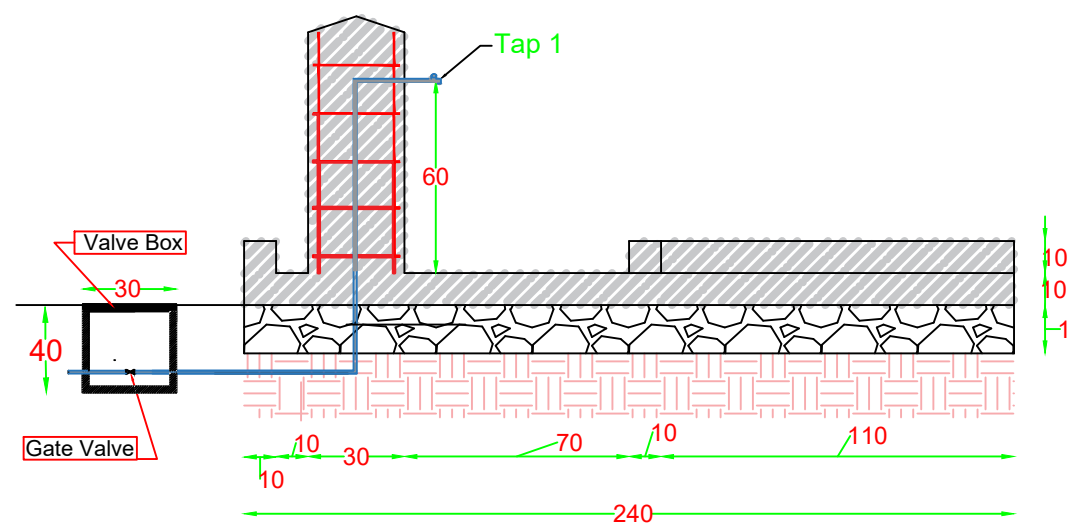
Section A-A



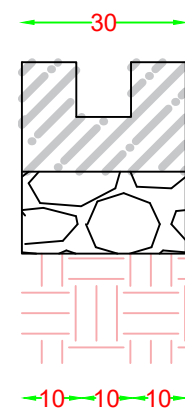
Top View



Section B-B

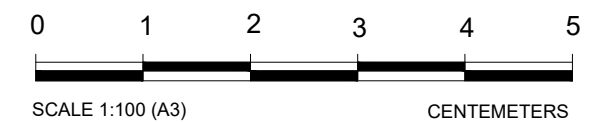


Section C-C



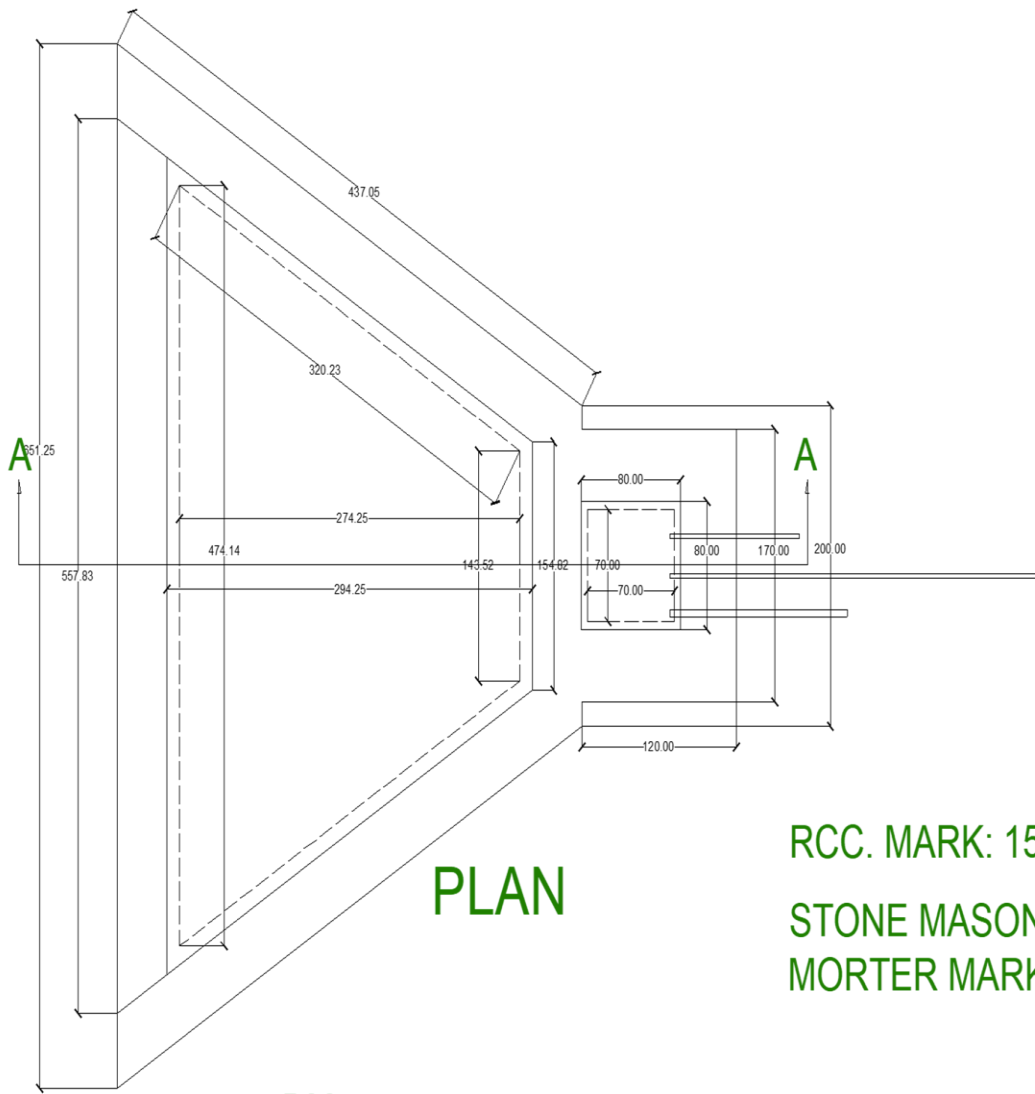
Notes:

1. THIS IS A TYPICAL GENERAL DRAWING, THE CONTRACTOR IS RESPONSIBLE TO ADAPT IT TO THE SITE CONDITIONS.
2. ALL DIMENSIONS ARE INDICATED IN CENTIMETERS.
3. DO NOT IGNORE USAGE OF PRVs (PRESSURE RELEASE VALVES) AT THEIR SPECIFIC LOCATIONS INCASE OF ANY HESITANCY PLEASE CONTACT DESIGN TEAM.
4. IN GENERAL THE TAP STANDS ARE SINGLE TAP STANDS. TWIN TAPS ARE SPECIFIED IN NETWORK DRAWING SHEET OF THE PACKAGE.
5. IN CASE OF UNAVAILIBTY OF THE AREA, INSTALL SINGLE TAP WITH 19MM(3/4 ") DIAMETER IN REPLACEMENT OF TWIN TAP.
6. SYMBOLS AND ABBREVIATION LIST IS ATTACHED AT THE END.



Designed by: Farhad Sarwary

SPRING PROTECTION DESIGN



RCC. MARK: 150

STONE MASONRY

MORTER MARK: 350

